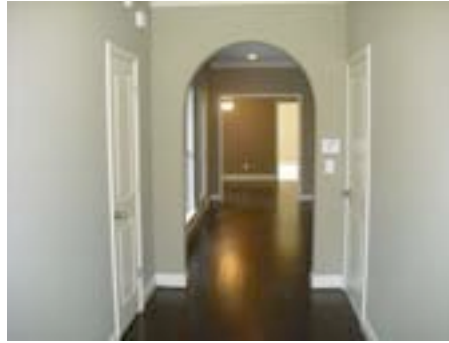


Strasburg Plan

Lot 96



1000 NORMAN WAY

MLS#:450940

\$199,940

Walking distance to shops, restaurants and churches in the Town of Mt. Laurel, Dunnivant Square is just minutes from Inverness. The European-style cottages of Dunnivant Square have Energy Star features offering energy efficient windows, appliances, tankless water heaters and more. Neighborhood amenities include 5.72 acres of undisturbed wetlands, sidewalks, park and streetlights.

- Bedrooms: 3
- Baths: 2.5
- Open floor plan
- Stainless GE appliances and Granite counters in kitchen
- Security system
- Tankless water heater
- Gas fireplace
- Walk-in attic storage
- Sprinkler system
- Master suite on main level

Directions: 280 EAST TO HUGH DANIEL DRIVE, TURN RIGHT ON HWY 41, APPROX 1.5 MILES TURN RIGHT INTO DUNNAVANT SQUARE ACROSS FORM THE TOWN OF MT LAUREL. OR HWY 280 EAST. LEFT ON 41. THREE MILES ON LEFT, ACROSS FROM THE TOWN OF MT. LAUREL.



For More Information Contact:

Priscilla Ingram
RealtySouth-Inverness
Office

Cell: 205-229-2266

Email:

pingram@realtysouth.com
www.PriscillaIngram.com

Freida Zamiatata
RealtySouth-I459 Southwest

Direct: 205-408-3887

Cell: 205-516-2297

Email : fzamiatata@realtysouth.com
www.FreidaZamiatata.realtysouth.com



independently verified.--